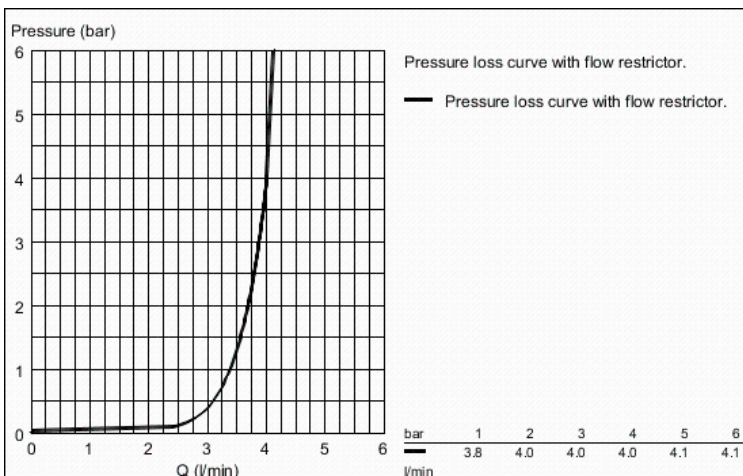
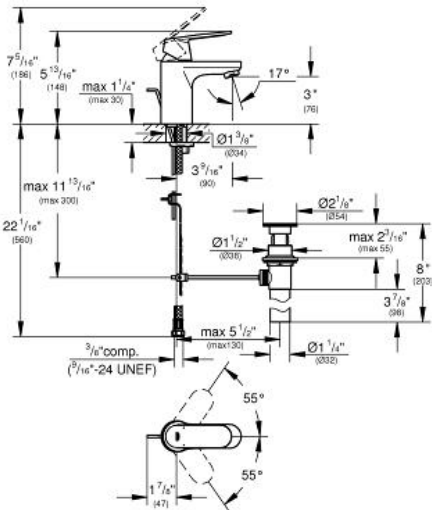


# EUROSMART COSMOPOLITAN Single-Handle Bathroom Faucet S- Size

MODEL # 3287500A

GROHE CANADA, INC. | 5900 Avebury Road, Mississauga, Ontario, Canada L5R 3M3  
Phone: 905-271-2929 | Fax: 905-271-9494 | info@grohe.ca

Pure Freude  
an Wasser



**Product Description:**  
**EUROSMART COSMOPOLITAN**  
**Single-Handle Bathroom Faucet S-Size**

**Standard Specification:**

- Single hole installation
- Metal lever handle
- **GROHE SilkMove** 1.4" (35 mm) ceramic cartridge
- **GROHE StarLight** chrome finish
- Adjustable flow rate limiter
- Adjustable minimum flow rate 2.5 l/min
- Flow control
- Pop-up waste set 1 1/4"
- Stainless steel flex lines
- Optional temperature limiter ref. no. 46 375
- Noise classification 1 in accordance with DIN4109 incl. certificate
- Max flow rate: 1.2 gpm (4.56 L/min)

**Applicable Codes & Standards:**

- Energy Policy Act of 1992
- NSF 61
- ASME A112.18.1/CSA B125.1
- US Federal and State material regulations
- EPA WaterSense®
- ICC/ANSI A117.1

**Color:**

- 3287500A StarLight Chrome