



MATWORKS

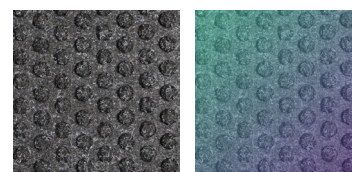
PROTECT EVERY STEP



- REPP-Tile® flooring is a high-performance polyester entryway tile that never has to end up in a landfill.
- REPP-Tile brings you the durability and stain resistance of recycled polyethylene terephthalate (PET) in a form that can be recycled again and again.
- When this high-performance product reaches the end of its lifecycle - typically 5 years - it can be recycled and find new life in another REPP-Tile.
- The MatWorks manages the entire process from installation to removal and recycling, meaning that your role is not only hassle-free, but you can rest assured that no materials go to waste.



Colors

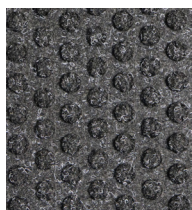


Anthracite

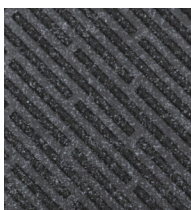
Custom

Custom colors pending volume for color matching.

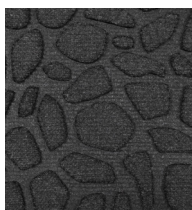
Designs/Patterns



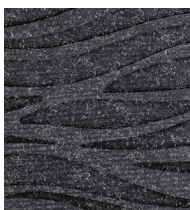
Dots



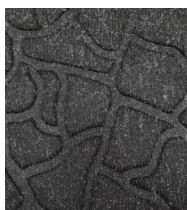
Broken Diagonal



River Stones

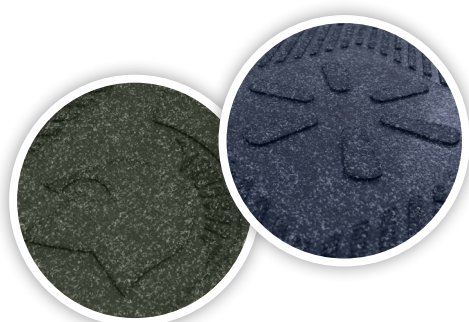
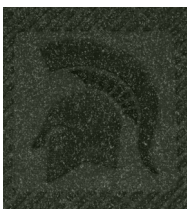
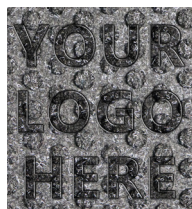


Rogue Wave



Dry Desert

Custom

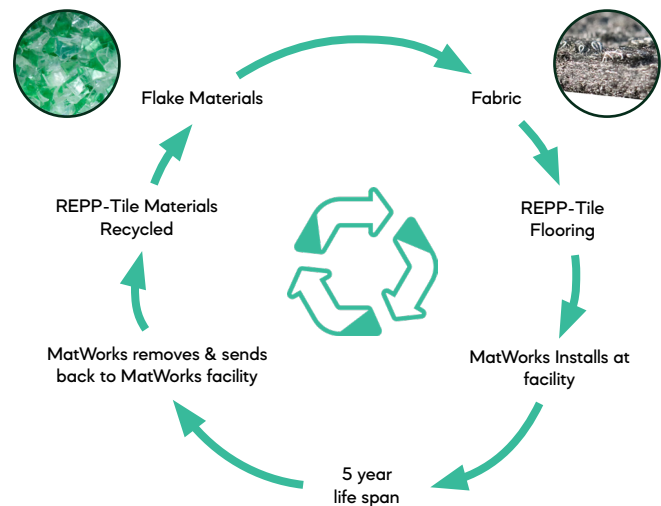


PRODUCT INFO

Specifications	
Size	19.5" x 19.5"
Pile Height	1/32"
Overall Thickness	1/4"
Material	Polyethylene terephthalate (PET)
Material Weight	70 ounces/yard ²
Backing	REPP-Flex
Installation	TacFast or Glue-down
Performance	5 years Under normal use
100% Customer Satisfaction Based on the life of the product	

REPP-Tile Closed-Loop Lifecycle

REPP-Tile flooring eliminates the need for single-use alternatives. It is made with recycled materials that can be recycled again and again, creating a closed-loop lifecycle and a truly sustainable solution.



CLEANING INSTRUCTIONS

MatWorks strongly recommends cleaning your carpet tiles daily to maintain functionality and appearance. The maintenance schedule should start on the installation date to achieve the maximum life expectancy of the product.

DAILY CLEANING:

- Vacuum daily with a commercial-grade vacuum cleaner with a rotary power brush or beater bar.

QUARTERLY MAINTENANCE:

- Use a high-performance, hot water extraction method a minimum of four times a year. Based on store traffic or environmental conditions such as increased salt, sand, and dirt, up to six times a year may be necessary.



SCAN FOR INSTALL GUIDE

