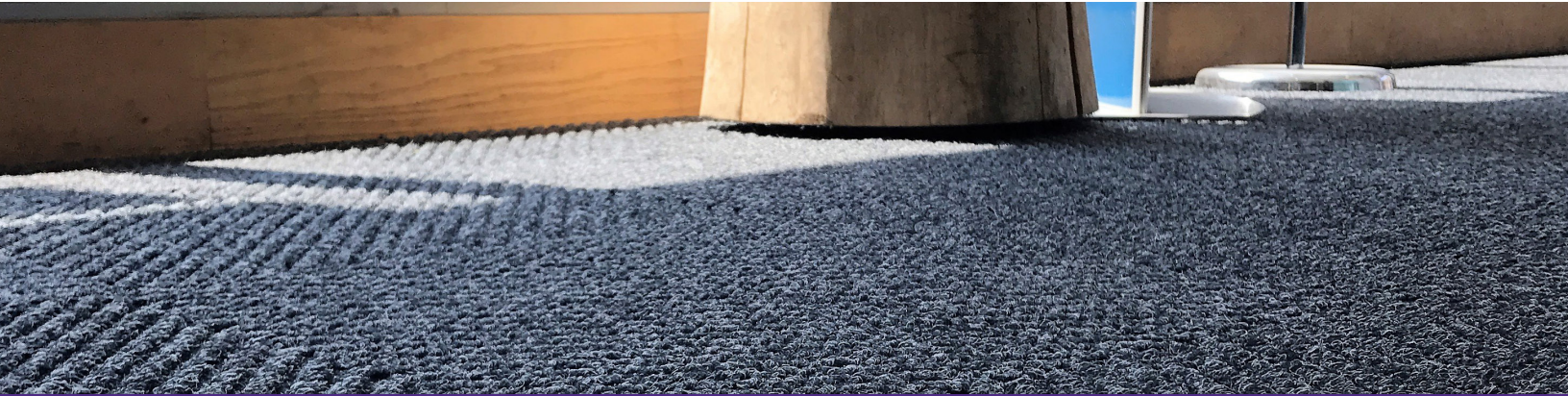




**MATWORKS**  
PROTECT EVERY STEP

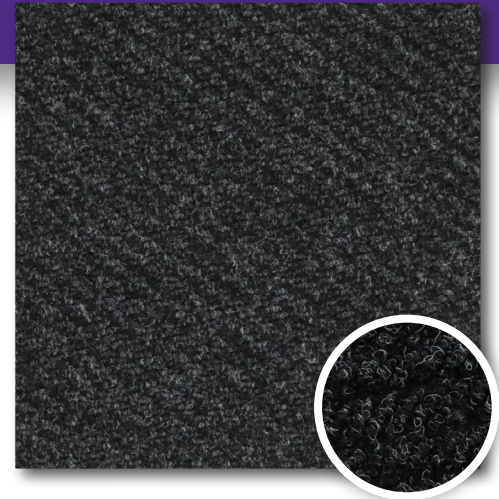


# Diagonal Tile

*Entrance Carpet Tile*



- Diagonal tiles are durable carpet tiles designed to withstand heavy foot traffic, making them suitable for any entrance.
- They're made from a unique fiber blend that will scrape dirt, debris, and moisture from shoes, helping to prevent tracking throughout your facility and maintain a clean store.
- The surface features a unique diagonal pattern, adding a layer of sophistication to your facility's entrance.



Charcoal



Brown

Custom colors available with minimum volume requirements.



Designed to be laid with a quarter turn, these tiles create entryways that are as beautiful as they are durable.

# PRODUCT INFO

Specifications	
Size	19.69" x 19.69"
Tiles Per Case	16
Overall Thickness	.41"
Material	Blend of polypropylene and polyethylene terephthalate (PET)
Material Weight	59 ounces/yard <sup>2</sup>
Backing	Bitumen
Installation	Glue down or TacFast
Performance	5 years Under normal use
100% Customer Satisfaction Based on the life of the product	

## CLEANING INSTRUCTIONS

MatWorks strongly recommends cleaning your carpet tiles daily to maintain functionality and appearance. The maintenance schedule should start on the installation date to achieve the maximum life expectancy of the product.

### DAILY CLEANING:

- Vacuum daily with a commercial-grade vacuum cleaner with a rotary power brush or beater bar.

### QUARTERLY MAINTENANCE:

- Use a high-performance, hot water extraction method a minimum of four times a year. Based on store traffic or environmental conditions such as increased salt, sand, and dirt, up to six times a year may be necessary.



SCAN FOR INSTALL GUIDE

