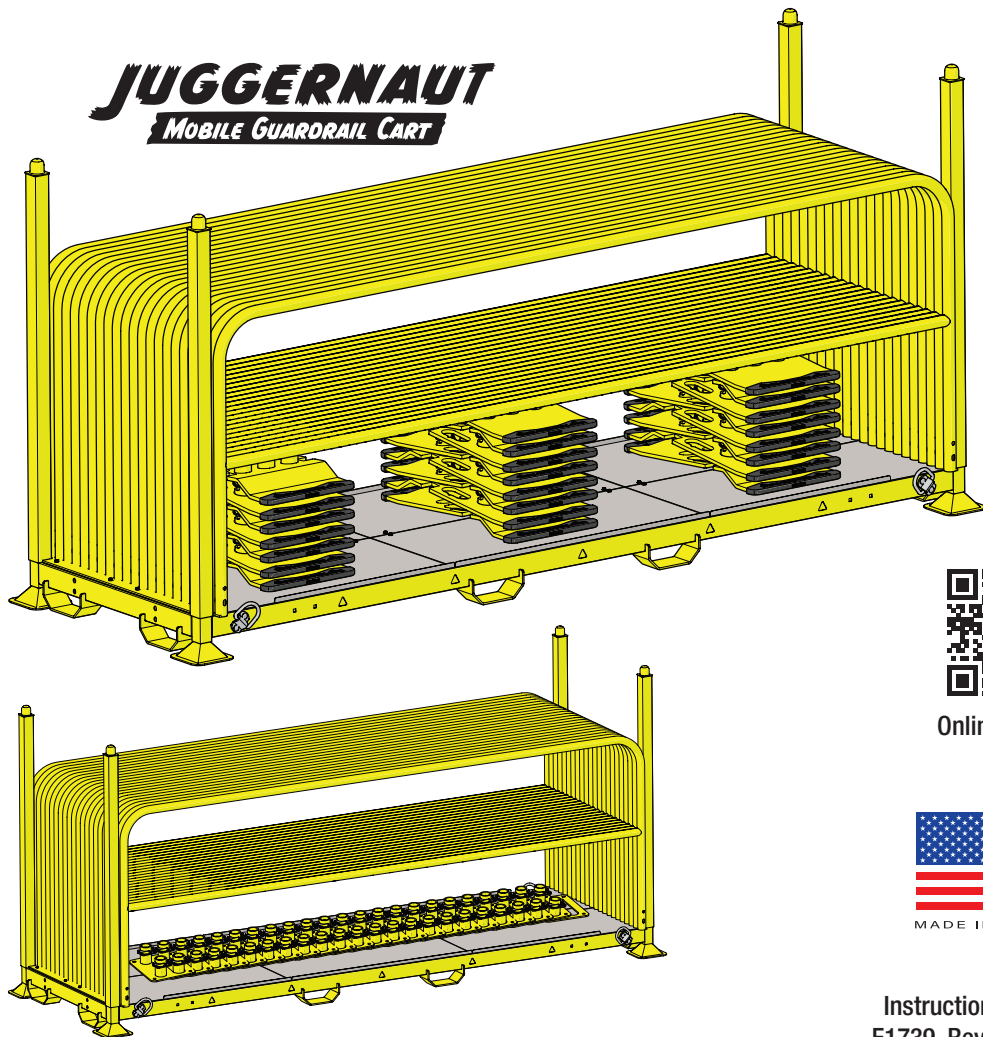


Juggernaut and Guardrail Instructions

JUGGERNAUT MOBILE GUARDRAIL CART

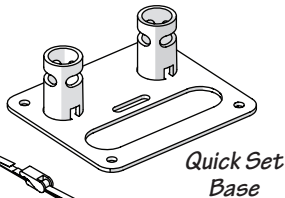
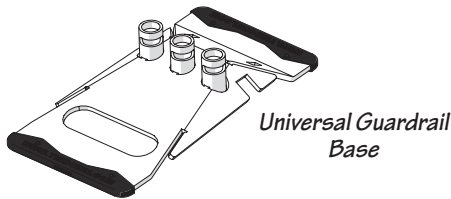
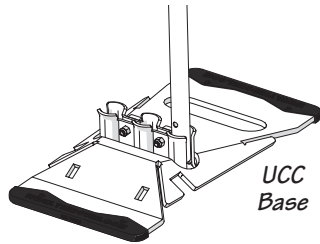


Online Manual



Instruction #08342
E1739, Rev. 5/28/25

Guardrail and Base Installation

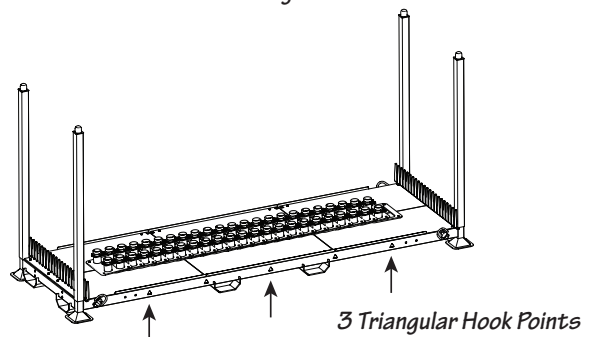
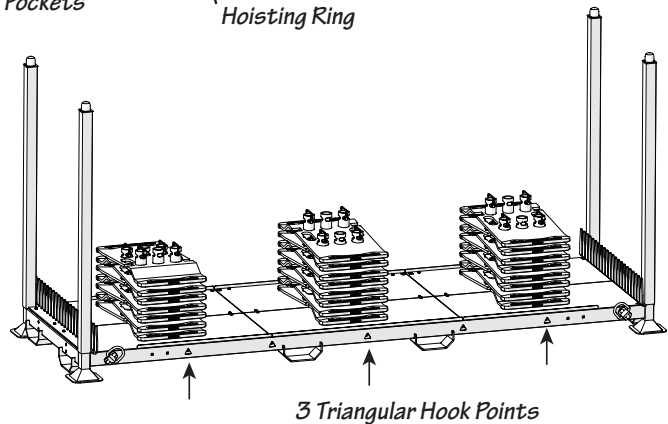
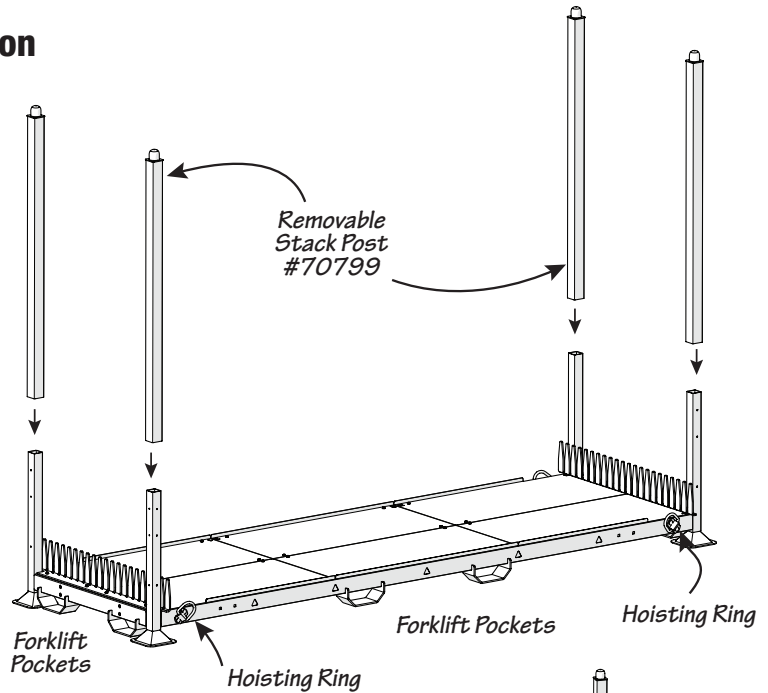


Safety Strap

Loading The Juggernaut Cart

Bases should be centered and in alignment with the 3 hook points located on the side of the cart. Shown right.

Quick Set Bases should be inter stacked, centered in the center of the cart. Shown right.



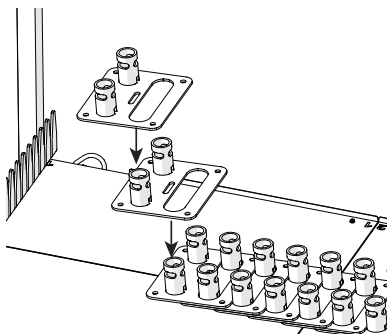
Loading The Juggernaut Cart

With 2 workers place each guardrail in the slots provided between the post. Load all guardrails on the Juggernaut.

Prior to transporting or hoisting the Juggernaut bases and guardrails must be secured with Pull Straps

Secure bases with the pull strap by placing it over and in between the base guide post.

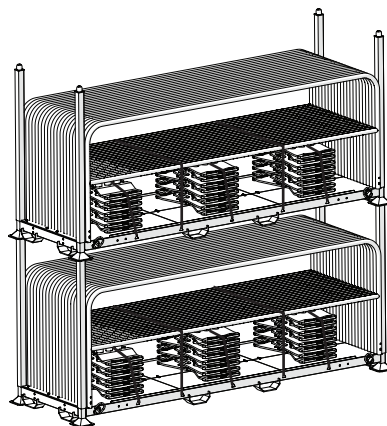
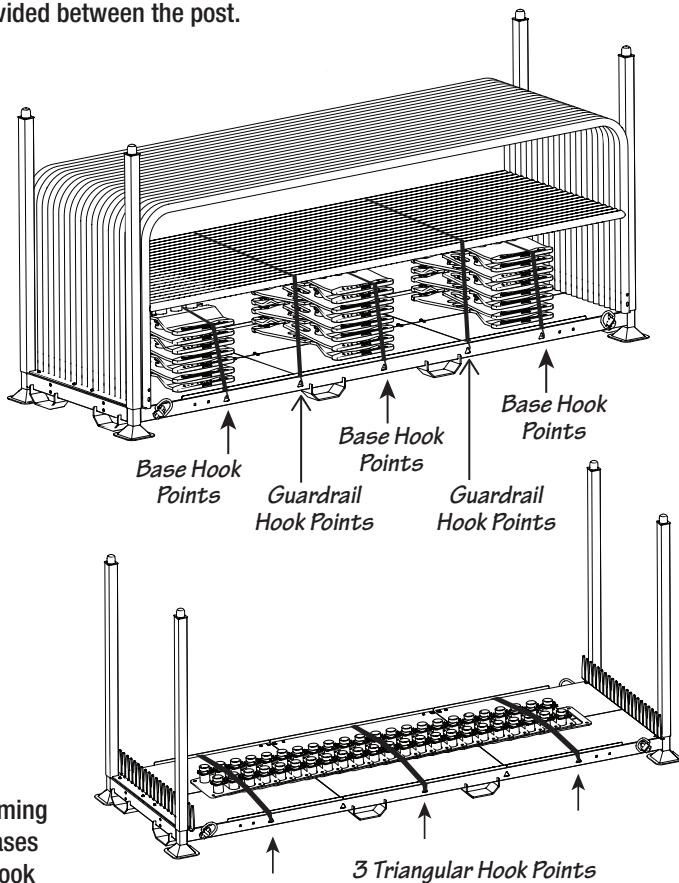
Secure the guardrails by attaching the pull straps over the mid rail. Use the hook points located between the base hook points



Quick Set bases are stacked over the each other forming a secure interlocking chain. Secure the Quick Set Bases with three safety pull straps using the 3 triangular hook points on the side of the cart.

WARNING!

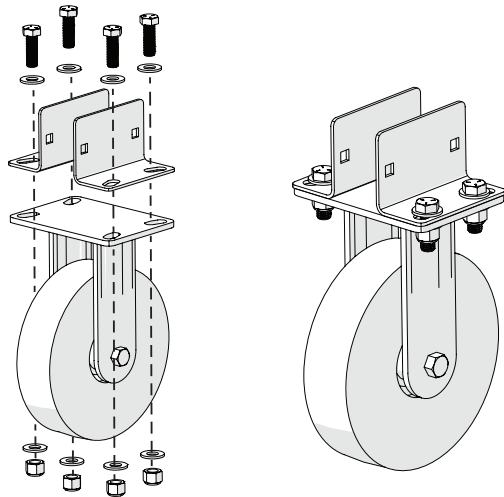
- DO NOT STACK MORE THAN TWO HIGH (LOADED)
- DO NOT MOVE LOADED STACKED JUGGERNAUTS
- STACKING THE JUGGERNAUTS IS INTENDED FOR STORAGE PURPOSES ONLY



Caster Installation

Caster Bracket Assembly

Loosely install brackets onto the casters with the nuts, bolts and washers provided. Follow assembly shown on the right. Do not tighten.

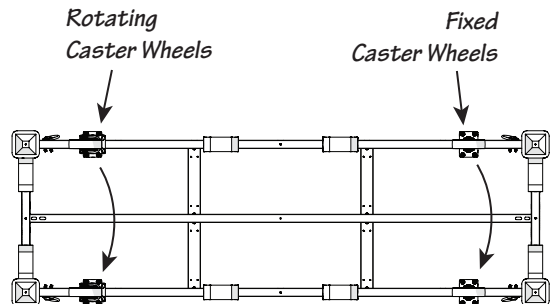


Caster Wheel Placement

It is recommended to use a forklift and rise the Juggernaut cart off the ground about two feet.

The Juggernaut Cart is equipped with two sets of casters, rotating and fixed.

Before assembling the casters to the Juggernaut make sure the rotating casters are on both positioned on the same short end of the cart.

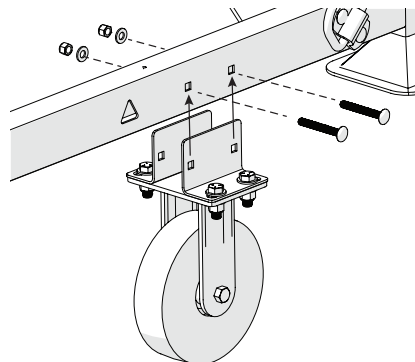


Caster to Juggernaut Assembly

Locate the 2 square mounting holes on the each side near the end of the cart. Align brackets with the square mounting holes.

Install onto the frame as shown right using the carriage bolts and nuts provided.

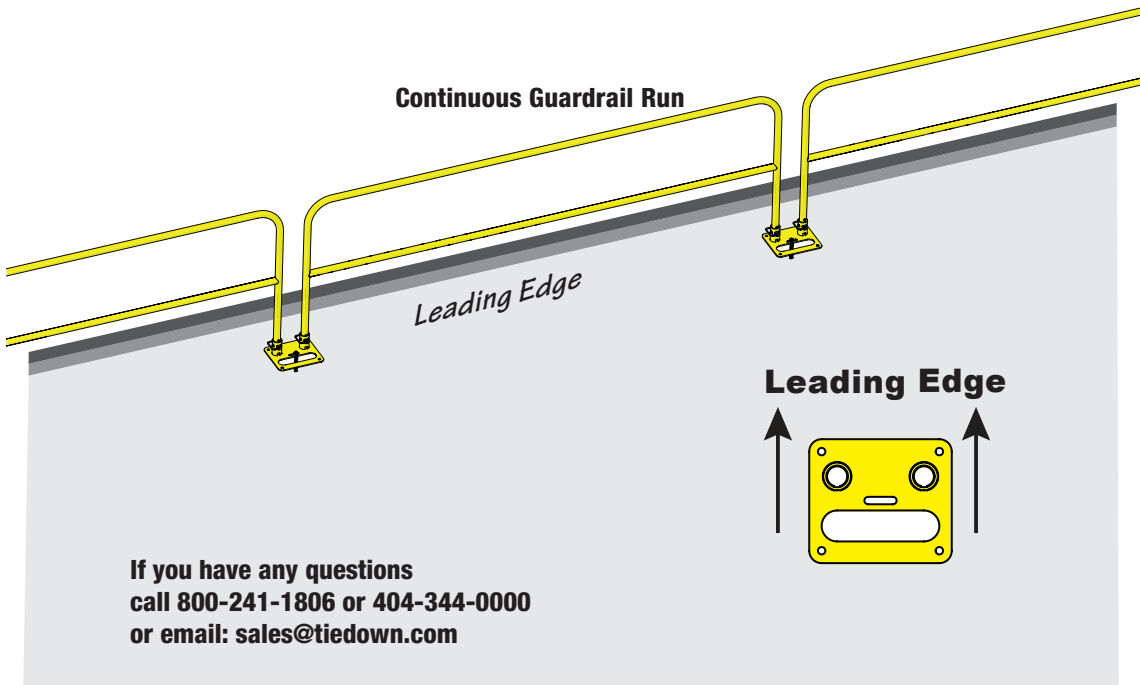
Tighten the carriage bolts and nuts attached to the frame. Next tighten the 4 nuts and bolts for the caster/bracket.



Quick Set Base Set Up Instructions

Prior to installation/set-up of the Universal Guardrail System, a competent person must develop a system layout plan.

1. Evaluate the surface to confirm that the guardrail system will not be installed on top of gravel or slippery surfaces.
2. Measure the work surface area to be protected and space the Quick SET base plate accordingly (10 ft. centers for long runs, 7-1/2' and or 5 ft. centers where required).
3. All Quick Set Base plates must be located a minimum distance of 18 in. from a "no curb"/parapet leading edge, or opening. If the work location has a curb or parapet edge, the Quick Set Base can be placed perpendicular against the rise of the structure.
4. Always be aware of all electrical hazards (ELECTRICITY KILLS). A minimum safe distance of 10 ft. away from power lines and other electrical hazards must be maintained at all times.
5. Quick Set base plates must be oriented correctly with the guardrails installed perpendicular. Toe boards are installed parallel to the guardrails. Safety clips pins must be inserted through all Quick Set base plates and guardrails.
6. The guardrail layout must be installed in a continuous run, and must completely block all applicable leading edges of potential fall hazards. Do not attempt to relocate a fully assembled system.



Assembly and Mounting

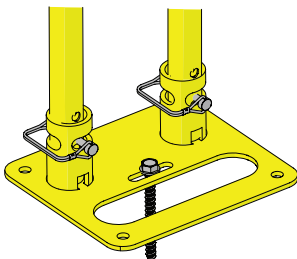
1. Place all Quick Set bases around the leading edge of the fall hazard area, space the Quick Set bases at approximate lengths of the corresponding length of guardrail (10', 7.5' and 5').
2. When assembling the guardrails into the Quick Set, position the guardrails between the fall hazard and the installers work area. Position one leg of each guardrail into the outermost Quick Set retaining tube. Maintaining the guardrail positions between the installers body and the fall hazard edge, position the tube into the adjacent Quick Set retaining tube.
3. Once each guardrail tube has been inserted into the Quick Set retaining tube, install the retaining pins.

Securing the Base

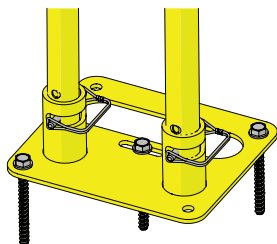
Quick Set base plates are only approved for concrete substrates with a minimum slab thickness of 6 inches with a minimum concrete strength of 3,000 psi, normal weight, (cracked) concrete.

**Screw should be 3.5 inches in length. 0.5 inches in diameter.
Rated for 1000 pounds of pull out force in substrate used.**

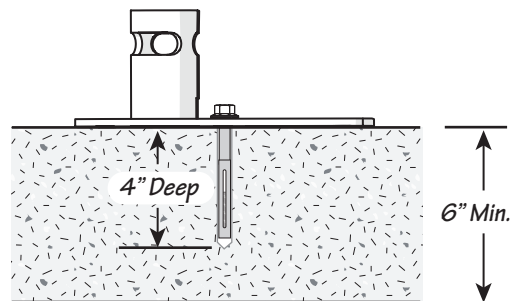
1. Using the Quick Set plate as a guide: first drill a 1/2"x 4" hole using a carbide-tipped masonry bit. The quickest, easiest way to drill into concrete is with a hammer drill. It's also important to blow or vacuum the concrete dust from the hole before inserting the fastener. Fasteners grip much more tightly to clean, dust-free holes.
2. Follow installation instructions supplied with the type fastener you are using.



Single Screw Attachment
Must be attached through
the center slot



Multi Screw Attachment
Additional screws may be
added for additional security



Use these instructions as part of a training program required by OSHA and any applicable state agency. The user must understand how to safely use the Universal and UCC (Universal Compression Clamp) Guardrail Systems and all safety equipment used in combination with the guardrails. The Universal and UCC Guardrails may be used as temporary or permanent guardrail systems.

The employer must assign a highly trained and experienced competent person to be responsible for all elements of a fall safety program, including the regulation, management, and application as it relates to the use of the Universal Guardrails and related systems.

Safety Information

Serious injury, bodily harm, or death may result if there is a failure to understand and comply with safety regulations. These instructions are not all-inclusive. They are for reference only and not intended to replace a competent person, knowledge, or judgment of Federal and State Standards. Consult the new OSHA rule (Walking-Working Surfaces, 1910.28) as well as local, State, and Federal OSHA rules.

Workplace conditions including, but not limited to, weather conditions, corrosive chemicals, potential electrical hazards, sharp objects/surfaces, and slope of a surface must be evaluated by a competent person before equipment is selected, installed, and work begins. Do not misuse equipment. Do not alter equipment. Unprotected leading edges and sides that are 6 feet or more above the next lowest level require the use of guardrails, safety nets, or personal fall protection devices. Never lean or climb on a guardrail.

Inspection of the Universal/UCC Guardrails must take place routinely at intervals not to exceed 6 months. A competent person other than the end user must be responsible for the inspection of the Universal/UCC Guardrail Systems. All inspections must be recorded by a competent person who must sign their initials and date (month/-year) in the appropriate box on the inspection grid decal for the month and year the inspection was conducted.

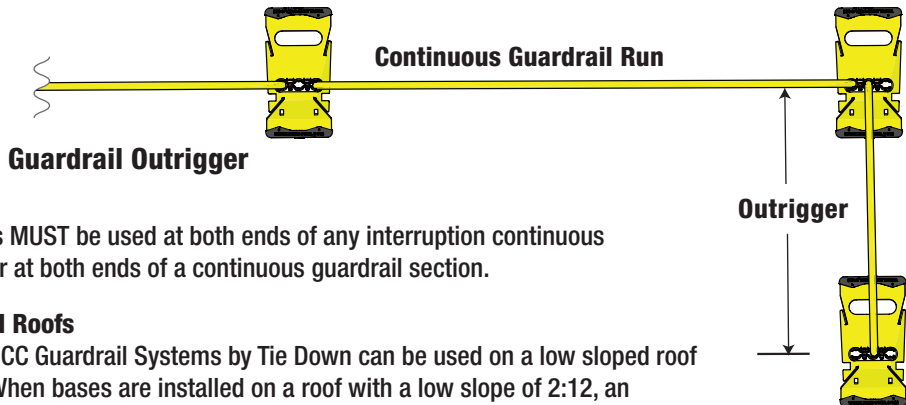
Prior to installation/set-up of the Universal Guardrail System, a competent person must develop a system layout plan.

1. Evaluate the roof surface to confirm that the Guardrail System will not be installed on top of gravel or slippery surfaces.
2. Measure the work surface area to be protected and space the base plates accordingly (10 ft. centers for long runs, 7-1/2' and or 5 ft. centers where required).
3. All base plates must be located a minimum distance of 18 in. from a "no curb"/parapet leading edge, or opening. If the work location has a curb or parapet edge, the Zip Base can be placed perpendicular against the rise of the structure.
4. Always be aware of all electrical hazards (ELECTRICITY KILLS). A minimum safe distance of 10 ft. away from power lines and other electrical hazards must be maintained at all times.
5. base plates must be oriented correctly with the Universal Guardrails installed perpendicular. Toe boards are installed parallel to the guardrails. Safety clips pins must be inserted through all zip base plates and guardrails.

6. The Universal Guardrail System must be installed in a continuous run, and must completely block all applicable leading edges of potential fall hazards. Do not attempt to relocate a fully assembled system.
7. Guardrail Outriggers **MUST** be used at both ends of any interruption in continuous guardrail sections, or at both ends of a continuous guardrail section. See back for example.
8. A Guardrail Outrigger is installed perpendicular to a continuous guardrail run.

IMPORTANT: Zip Base plate must be placed perpendicular to the orientation of the guardrails. The base can be orientated with long or short edge pointed to the direction of the leading edge. To minimize trip hazards, install short end of base away from leading edge.

Leading Edge

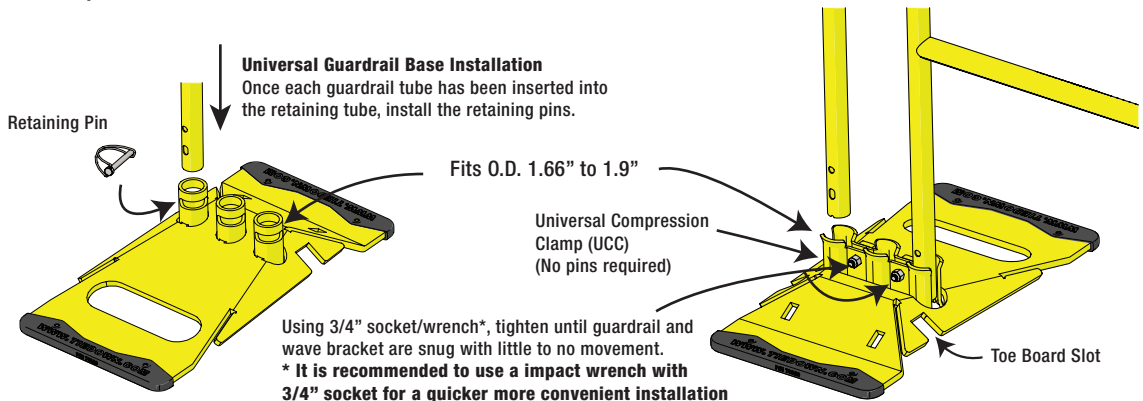


IMPORTANT!

Guardrail Outriggers **MUST** be used at both ends of any interruption continuous guardrail sections or at both ends of a continuous guardrail section.

Use on Low Sloped Roofs

The Universal and UCC Guardrail Systems by Tie Down can be used on a low sloped roof up to a 2:12 pitch. When bases are installed on a roof with a low slope of 2:12, an additional 5 ft. rail, guardrail base, and outrigger must be placed every 20 ft. Follow all other installation instructions of the Tie Down's Guardrail Systems. If you have any questions, please contact Tie Down.



TIE DOWN

MANUFACTURING INGENUITY

Safety Products Division
 605 Stonehill Drive SW, Atlanta, Georgia 30336
 404-344-0000 • www.tiedown.com
 ISO 9001:2015 Certification
 Intellectual Property of TIE DOWN Inc. ©2018 TIE DOWN, Inc.
 Instruction #08340 (E1733 Rev. 5/27/25)