

TECHNICAL DATA SHEET

Customer:

Project:

Date:

Reference:

Design Criteria

Medium	: Water / Glycol (max.%50)
Max. flow velocity	: 1,5 m/s
Max. flow rate	: 30 m ³ /h
Primary flow rate (Qp)	: 0
Secondary flow rate (Qs)	: 0
Max. Capacity (ΔT 20)	: 0 kW
Max. Pressure	: 10 barg
Max. Temperature	: 110°C
Design standard	: PED 2014 / 68 / EU

CC1 Magnetic Combi Air & Dirt Separator Standard Flow DN80

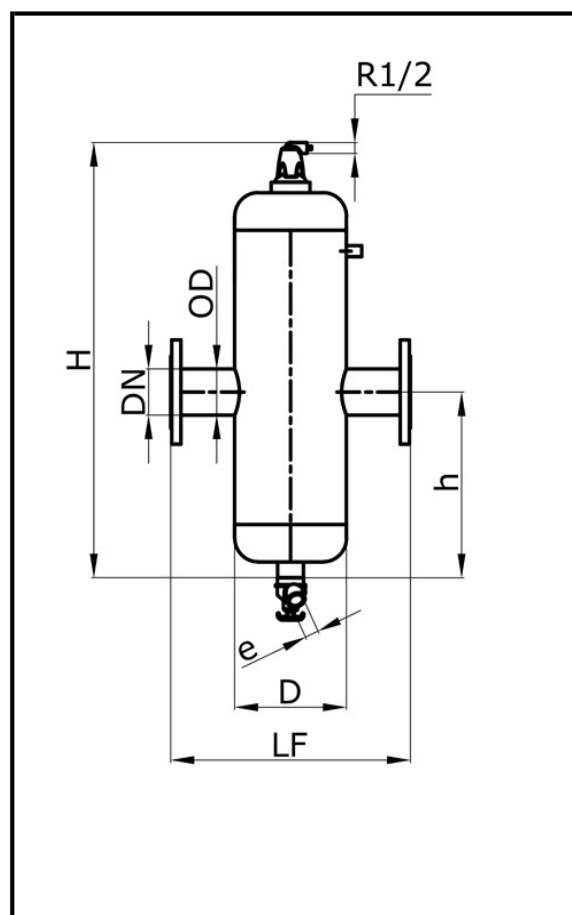
Item code: 33006242/0080

Testing and Quality Assurance

Pressure Test (bar)	: 15 bar
Medium Test	: Water
Test certificate	: ISO / TSE / CE
Design and manufacturing acc. 2014/68/EU	: Yes
Material certificates (structural parts)	: Mil Test
Drawing	: Yes
Weld procedures	: prEN ISO 15612
Nondestructive testing (X-ray:10%)	: Yes
Notified body inspection	: Yes

Construction Materials

Body	: S235 JR G2 (ST 37)
Connections	: S235 JR G2 (ST 37)
Fittings	: S235 JR G2 (ST 37)
Flanges (DIN2633 PN16)	: C22.8
Heads	: S235 JR G2 (ST 37)
Deaeration cap	: Brass
Valve sealing	: EPDM
Float	: PP
Viratube	: S235 JR G2 (ST 37)
Wire	: 304 Stainless Steel
Solder	: Soft
Paint	: Electrostatic
Color	: Blue
Drain valve	: Brass



DN	:	80
OD	:	88,9 mm
H	:	799 mm
h	:	345 mm
D	:	219 mm
LF / L	:	470 mm
e	:	2"
h1	:	0 mm
Volume	:	15 lt
Weight	:	25.2 kg