

Compact Fuel Pump (06969E)



Features

- Fuel can be easily supplied simply by turning on the key switch, ensuring reliable starting even in cold conditions.
- Versatile mounting layout due to miniaturization.
- Self-priming, plunger reciprocating type.



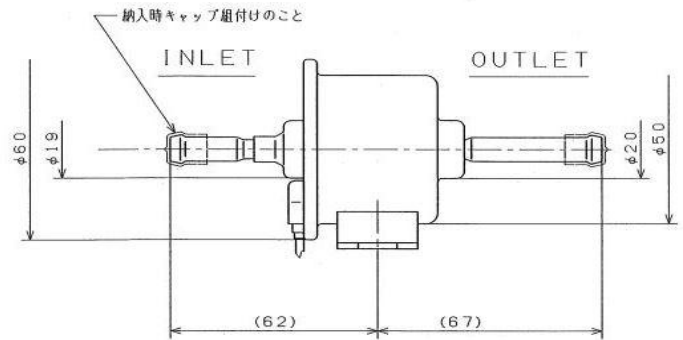
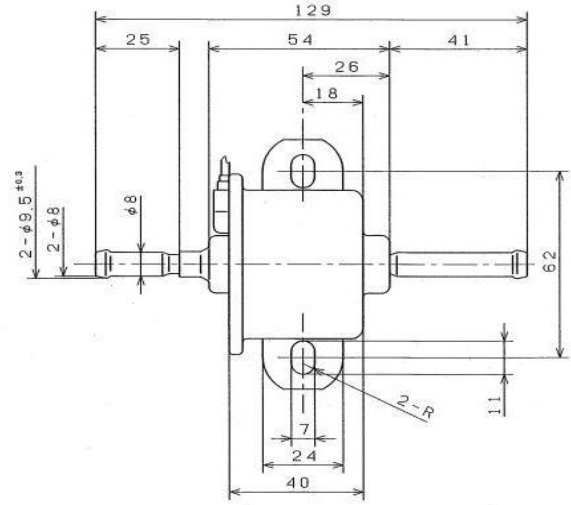
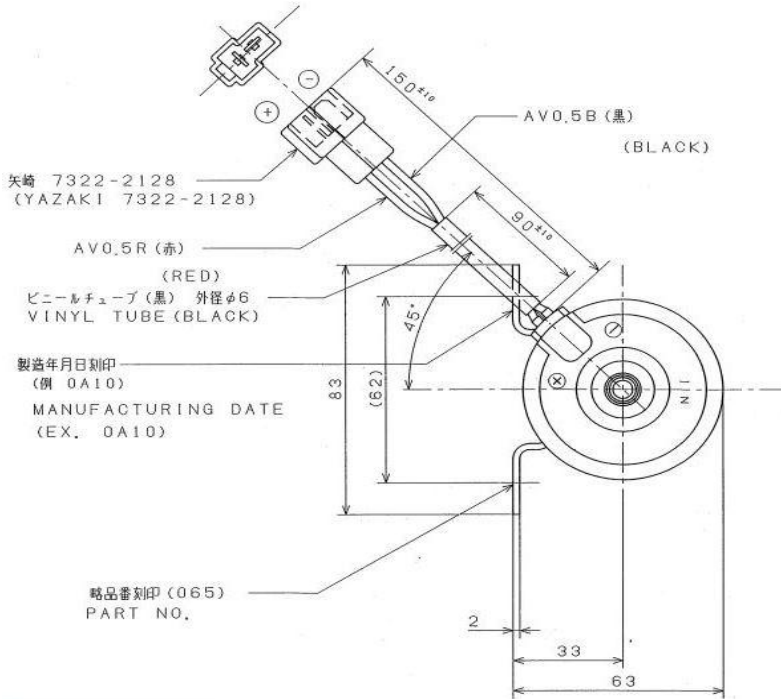
Specifications

Rated Voltage	DC12,24V
Operating Voltage	DC8.5~16.5V
Operating Current	1.5A or less
Suction Pressure(dry)	-4.0kPa or less
Flow Characteristics	See Chart (reference)
Vibration Resistance	JIS D1601-95 (Vibration test method for automotive parts), 5.3 (1) Step 45, no functional abnormality
Water Resistance	JIS D0203-94 (Moisture resistance and water resistance test method for automobile parts), No functional abnormality in D1
Durability	DC14V, 1000hr or more at room temperature (20 ± 15 °C)
Surface Treatment	Zinc plating (trivalent chromate)
Connector	YAZAKI 7123-6423
Mass	Approx. 305g

Compact Fuel Pump (06969E)



Dimensions



(REFERENCE) DELIVERY CHARACTERISTIC

流量特性 (参考)

