



FEATURES AND BENEFITS



**ECONYL®**

ICON KEY ON SECOND PAGE

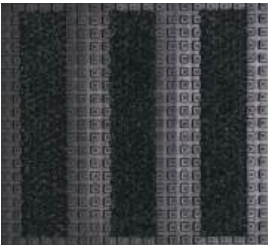
- No matwell required, interlocking entrance tiles can be laid to surface.
- Solid surface tiles effectively capture dirt to protect interior floors.
- Hardwearing nylon carpet inserts scrape dirt and wipe moisture.
- PVC base tile is manufactured from 100% recycled materials.
- Suitable for high volume footfall in commercial locations.
- Optional 'impact-resistant' bevelled edges and corners to withstand heavy shopping trolleys.
- Co-ordinating Alba carpet can also be supplied in rolls for primary and secondary dirt barrier use.
- Manufactured in the UK.

**Technical Specification**

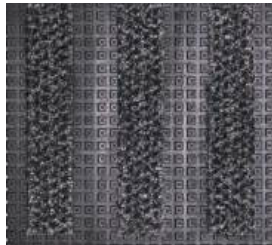
Uniclass	Pr_35_57_11_26 Entrance mats
CAWS	N10 / 300 Entrance Matting
Material	ECONYL® Regenerated Nylon inserts in PVC tile
Surface Finish	Carpet
Product Height	12 mm
Durability	Heavy to very heavy traffic entrances
Environmental Resistance	Suitable for dry environments
UV Resistance	Yes
Typical Applications	Entrance areas
Installation Method	Laid to surface - fixed with screws
Slip Tested to	BS 7976-2 – low slip potential
Fire Tested to	Alba inserts: BS EN 13501-1 Class C <sub>fl</sub> – s1
COO (Country of Origin)	UK
Tile Size	30cm x 30cm

Alba is a tufted carpet product and therefore its appearance can vary depending on the direction of the pile and the light in the surrounding environment. To achieve a uniform appearance consider hoovering the product in a single direction. Slip resistance specifications are based on the correct direction of travel i.e. perpendicular to the channels and inserts.

STYLES AND COLOURS



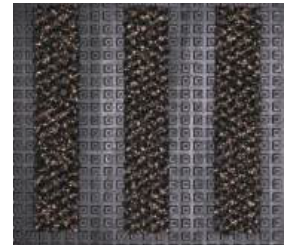
**Premier Surface**  
Alba Anthracite



**Premier Surface**  
Alba Grey



**Premier Surface**  
Alba Blue



**Premier Surface**  
Alba Brown