



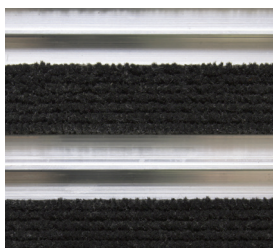
ICON KEY ON SECOND PAGE

- ➔ Assembled in modules for easier transportation and installation.
- ➔ Profiles are connected via heavy-duty steel wire for added durability.
- ➔ Reversible closed surface aluminium entrance matting.
- ➔ Suitable for indoor use.
- ➔ Two surface options: Rubber profiles with nylon filaments / Rubber scraper profiles.
- ➔ Custom-made to order.
- ➔ Accessories available.
- ➔ Single or double wiper available.

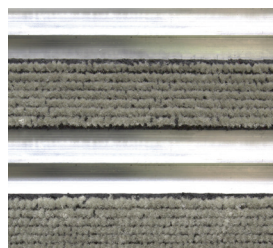
**Technical Specification**

Uniclass	Pr_35_57_11_26 Entrance mats
CAWS	N10 / 300 Entrance Matting
Material	Aluminium rails, Buffed rubber strips or Black rubber strips.
Surface Finish	Nylon filaments or black rubber inserts
Product Height	12mm Low Profile, 18 mm Standard Profile
Durability	Heavy to very heavy traffic entrances
Environmental Resistance	Suitable for dry environments
UV Resistance	Yes
Typical Applications	Entrance areas
Installation Method	Installed into recessed well
COO (Country of Origin)	NL

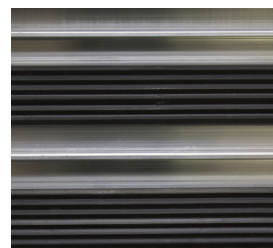
To achieve a uniform appearance consider hoovering the product in a single direction. Slip resistance specifications are based on the correct direction of travel i.e. perpendicular to the channels and inserts.



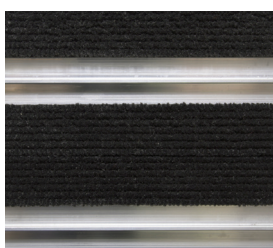
**Plan.c  
Single Wiper  
Black**



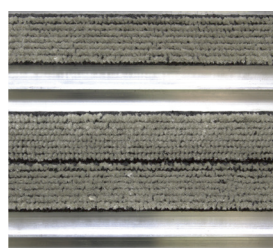
**Plan.c  
Single Wiper  
Grey**



**Plan.c  
Single Wiper  
Rubber**



**Plan.c  
Double Wiper  
Black**

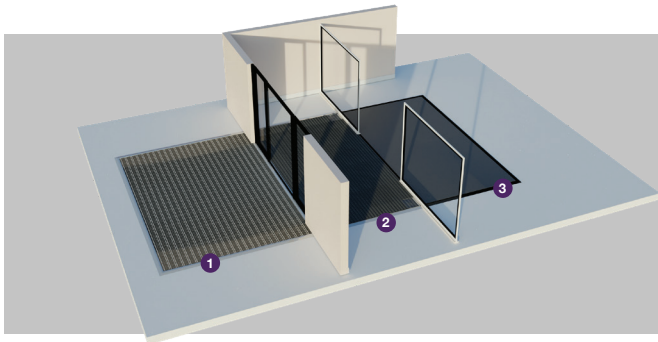


**Plan.c  
Double Wiper  
Grey**



**Plan.c  
Double Wiper  
Rubber**

ZONES



**Zones**

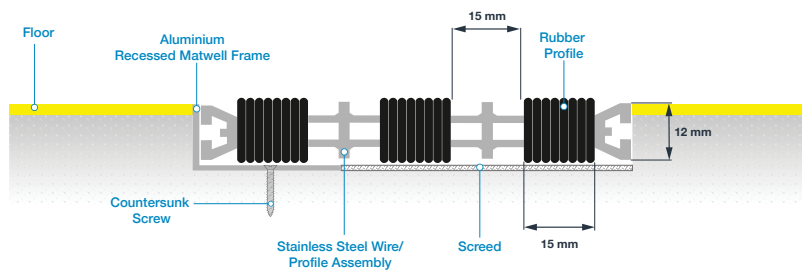
We recommend a zoning system when choosing your entrance matting. Whether your entrance extends outdoors or is fully covered, creating three zones delivers optimum dirt barrier performance, ensuring interior floors are kept clean and hazard free.



Light	Medium	High	Very High	Light	Medium	Heavy Duty	Max Duty	Dirt	Moisture
Less than 80 people per hour 3-4 metres	Up to 300 people per hour 6-7 metres	Around 600 people per hour 8-10 metres	Over 5,000 people per day 9-12 metres	Suitcases, Wheelchairs	Supermarket Trolleys, Sack barrows, Luggage trolleys	Supermarket Cages, Pallet Trucks	Forklift Trucks, Hydraulic Cranes	Most Effective Against Dirt/Soil	Most Effective Against Moisture
Pedestrian Traffic				Wheeled Traffic			Contaminants		
It is important that matting is a sufficient length to allow moisture and debris to be wiped off footwear as people walk across the mat. Our COBA Flooring team recommends a minimum of six footsteps for this to be effective.				Depending on the nature of the building, the entrance may have to contend with different types of wheeled traffic. It is important that all matting complies with DDA Regulations/The Equality Act, so that wheelchairs can safely move on and off.			All of our products protect you against contaminants, but some products are more effective than others for removing either dirt or moisture. Use these icons to determine which.		

INSTALLATION

**Plan.c Entrance Matting Low Profile  
Installed in a recessed well**



**Plan.c Entrance Matting Standard Profile  
Installed in a recessed well**

