

Technical Specification

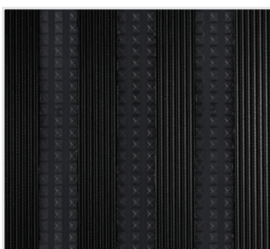


ICON KEY ON SECOND PAGE

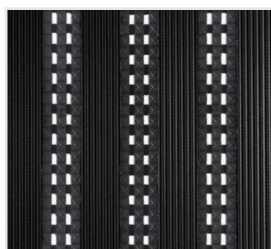
- ➔ Perfect for use at the point of entry for high footfall entrance matting systems.
- ➔ Excellent in combination with other Premier tiles in order to remove moisture and debris from footwear.
- ➔ Tested for trolley use
- ➔ Ribbed rubber inserts ensure reduced risk of slipping.
- ➔ Easy to install, clean and maintain
- ➔ Single modules can be easily replaced, which offers massive savings for maintenance and repairs.
- ➔ Links easy and direct with Premier Plus and Premier Track tiles.
- ➔ Fire tested to BS EN 13501-1 and slip tested to BS 7976-2.
- ➔ Accessories available.
- ➔ Manufactured in the UK.

Uniclass	Pr_35_57_11_26 Entrance mats
CAWS	N10 / 300 Entrance Matting
Material	Recycled PVC base tile with natural rubber inserts
Tile Size	300 mm x 450 mm
Tile Height	12.5 mm
Product Height	15 mm
Environmental Resistance	Suitable for wet and dry environments
Typical Applications	Entrance areas
Installation Method	Installed into recessed well
Fire Tested to	BS EN 13501-1 Class Cfl – s2.
Slip Tested to	BS 7976-2 – low slip potential
COO (Country of Origin)	UK

Notes: Slip resistance specifications are based on the correct direction of travel i.e. perpendicular to the channels and inserts.

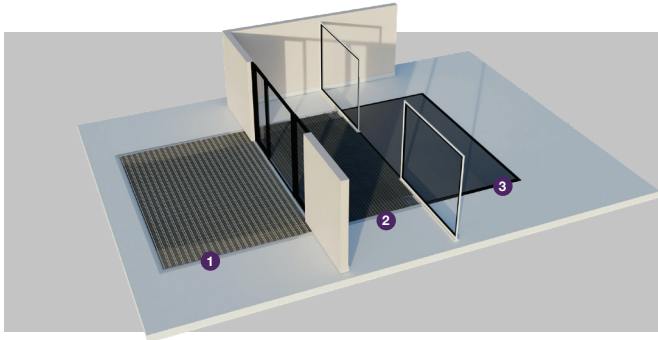


**Premier Rib
Closed Surface**



**Premier Rib
Open Surface**

ZONES



Zones

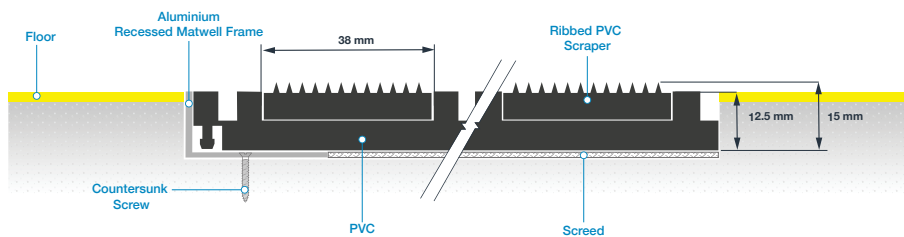
We recommend a zoning system when choosing your entrance matting. Whether your entrance extends outdoors or is fully covered, creating three zones delivers optimum dirt barrier performance, ensuring interior floors are kept clean and hazard free.



Light	Medium	High	Very High	Light	Medium	Heavy Duty	Max Duty	Dirt	Moisture
Less than 80 people per hour 3-4 metres	Up to 300 people per hour 6-7 metres	Around 600 people per hour 8-10 metres	Over 5,000 people per day 9-12 metres	Suitcases, Wheelchairs	Supermarket Trolleys, Sack barrows, Luggage trolleys	Supermarket Cages, Pallet Trucks	Forklift Trucks, Hydraulic Cranes	Most Effective Against Dirt/Soil	Most Effective Against Moisture
Pedestrian Traffic				Wheeled Traffic			Contaminants		
It is important that matting is a sufficient length to allow moisture and debris to be wiped off footwear as people walk across the mat. Our COBA Flooring team recommends a minimum of six footsteps for this to be effective.				Depending on the nature of the building, the entrance may have to contend with different types of wheeled traffic. It is important that all matting complies with DDA Regulations/The Equality Act, so that wheelchairs can safely move on and off.			All of our products protect you against contaminants, but some products are more effective than others for removing either dirt or moisture. Use these icons to determine which.		

INSTALLATION

**Premier Rib Entrance Matting
Installed in a recessed well**



**Premier Rib Entrance Matting
Installed on floor and finished with a ramped edge**

