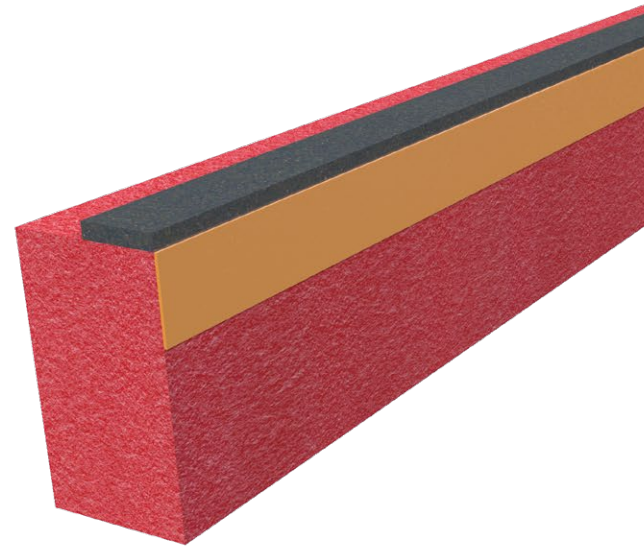


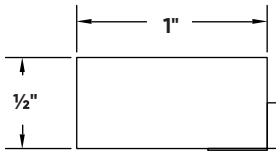
Hotrod® Type-X

Combining compressible foam with intumescent tape that expands when exposed to intense heat, Hotrod Type-X replaces finicky fire sprays over mineral wool. Its rectangular profile is easily compressed into a deflection gap between drywall and its adjoining structure for a fast, simple firestopping solution. Now available in a convenient rolled form for easier application in less time, with 100-200 feet of firestopping power per box!



Installation Guide

Technical Specs

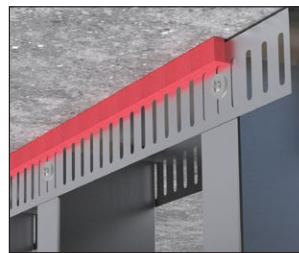


Scan Below for Installation Video

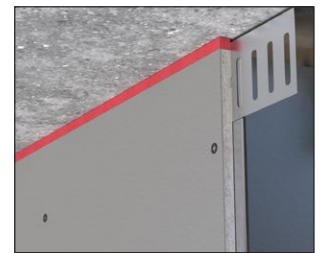


Installation Method A:

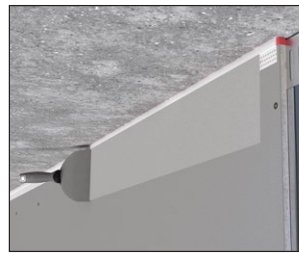
Step 1:



Step 2:



Step 3:



Installation Method A:

Step 1:

Remove film from double sided tape and install on the top track.

Step 2:

Install drywall leaving a 1/2" gap, ensuring that the Hotrod Type-X is compressed.

Step 3:

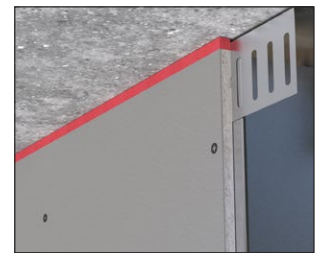
Install paper tape or Flat Deflection Bead over the Hotrod Type-X. Finish with drywall compound.

Installation Method B:

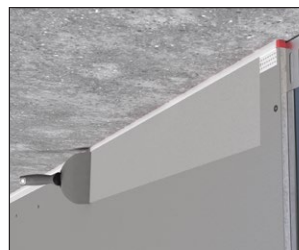
Step 1:



Step 2:



Step 3:



Installation Method B:

Step 1:

Install drywall leaving a 1/2" gap between the drywall and ceiling.

Step 2:

Install Hotrod Type-X in the gap ensuring the product is compressed, and that the intumescent tape has contact with the ceiling.

Step 3:

Install paper tape or Flat Deflection Bead over the Hotrod Type-X. Finish with drywall compound.