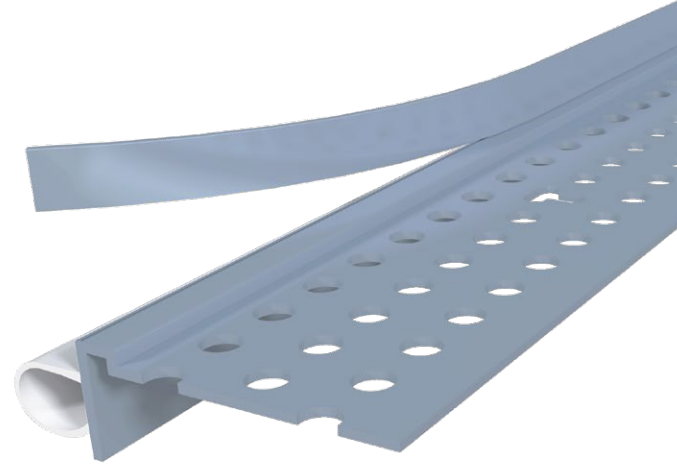


Super Seal Tear Away® L Bead Spec Sheet



STOCK NO.	SIZE	LENGTH	PCS. PER BOX
9210	3/8"	10'	30

Description: Super Seal Tear Away possesses a flexible bubble gasket, which forms a perfect, permanent seal around windows, doors and areas where drywall butts up to concrete walls. The attached tear-off strip acts as a protective mask for mudding. Delivers high-performance ratings for smoke and sound.

Advantages: Made from rust proof, dent resistant PVC to reduce jobsite and handling damage. Does not contain cellulose, a potential food source for mold.

Limitations: Product is designed for interior use.

Applicable Standards: Rigid PVC products made by Trim-Tex meet ASTM specifications D3678, D1784, C1047 and achieve a Class A rating for flame spread and smoke developed when tested under ASTM E84.

Surface Characteristics: Trim-Tex products are made from PVC. PVC does not support combustion and is self-extinguishing when the source of flame or heat is removed.

Installation: Trim-Tex recommends following established acceptable industry standard installation methods. Detailed installation instructions can be found at www.trim-tex.com.

Finishing: Always use a high quality paint.

Accessories: 847 Spray Adhesive and Safety Products distributed by Trim-Tex.

Installation Guide

Before Installation:

Ensure there is a 1/4" gap between the drywall edge and adjacent surface. Measure, cut and dry fit the bead.

Step 1:

Coat the bead with Trim-Tex 847 Spray Adhesive.

Step 2:

Press the bead in place, applying pressure to the mud legs.

Step 3:

Staple every 6"-8" using 1/2" staples.

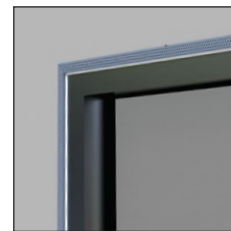
Step 4:

Finish with drywall compound. Remove tear-off strips prior to sanding.

Step 1:



Step 2:



Step 3:



Step 4:



Scan Below for
Installation Video

