

# Deflection Bead Spec Sheet

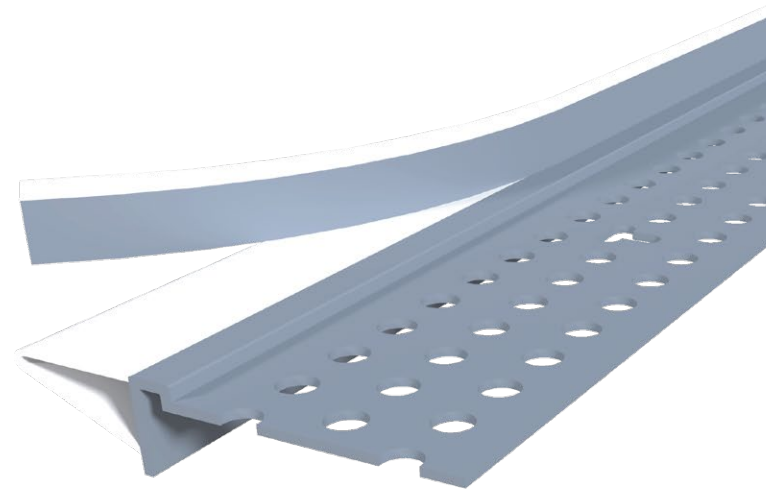
STOCK NO.	LENGTH	PCS. PER BOX
9220	10'	48

**Description:** When a wall joint is subject to the stresses of building movement, Deflection Bead is the best solution for the job. Its flexible gasket is able to form a perfect seal within the joint, compressing and expanding during deflection (up to 7/16"), thus preventing inside corner cracking. Delivers high-performance ratings for smoke and sound.

**Advantages:** Made from rust proof, dent resistant PVC to reduce jobsite and handling damage. Does not contain cellulose, a potential food source for mold.

**Limitations:** Product is designed for interior use.

**Applicable Standards:** Rigid PVC products made by Trim-Tex meet ASTM specifications D3678, D1784, C1047 and achieve a Class A rating for flame spread and smoke developed when tested under ASTM E84. Can be used in fire-rated and non fire-rated assemblies. UL Classified when installed with CEMCO® FAS® Track 1000. Deflection Bead is UL classified for fire rated joint-systems, see UL fire resistance directory R38710. STC 53 rating with two layers of 5/8" type gypsum on both sides of wall. STC 50 rating with two layers of 5/8" type gypsum on one side of wall and one layer 5/8" type gypsum on other.



**Surface Characteristics:** Trim-Tex products are made from PVC. PVC does not support combustion and is self-extinguishing when the source of flame or heat is removed.

**Installation:** Trim-Tex recommends following established acceptable industry standard installation methods. Detailed installation instructions can be found at [www.trim-tex.com](http://www.trim-tex.com).

**Finishing:** Always use a high quality paint.

**Accessories:** 847 Spray Adhesive and Safety Products distributed by Trim-Tex.

## Installation Guide

### Before Installation:

Hang drywall no more than 1/2" from the ceiling. Fill void with caulk or other cavity materials if necessary. Measure, cut and dry fit the bead.

### Step 1:

Coat both the bead and drywall with Trim-Tex 847 Spray Adhesive.

### Step 2:

Press the bead in place, creating a seal between the gasket and the ceiling - do not over-compress.

### Step 3:

Staple every 6"-8" using 1/2" staples.

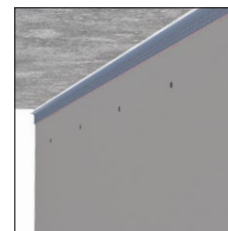
### Step 4:

Finish with drywall compound. Remove tear-off strips prior to sanding.

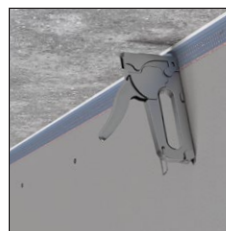
### Step 1:



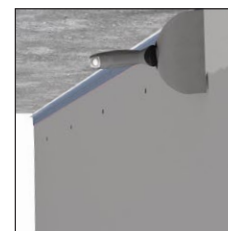
### Step 2:



### Step 3:



### Step 4:



Scan Below for  
Installation Video

