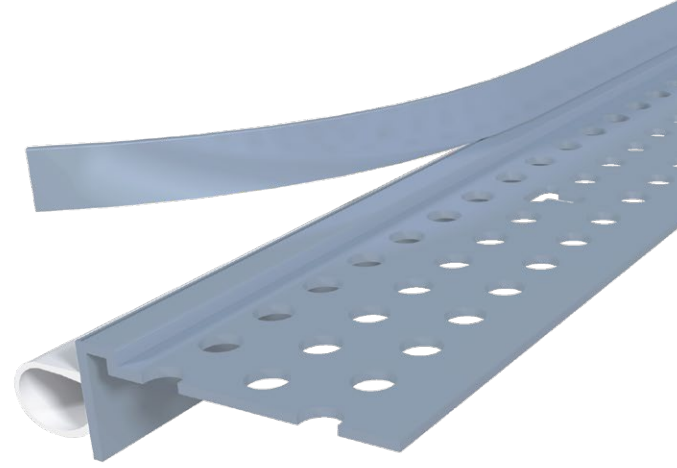


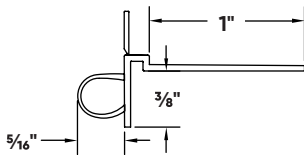
Super Seal Tear Away® L Bead

Super Seal Tear Away possesses a flexible bubble gasket, which forms a perfect, permanent seal around windows, doors and areas where drywall butts up to concrete walls. The attached tear-off strip acts as a protective mask for mudding. Delivers high-performance ratings for smoke and sound.



Installation Guide

Technical Specs



Scan Below for
Installation Video



Before Installation:

Ensure there is a 1/4" gap between the drywall edge and adjacent surface. Measure, cut and dry fit the bead.

Step 1:

Coat the bead with Trim-Tex 847 Spray Adhesive.

Step 2:

Press the bead in place, applying pressure to the mud legs.

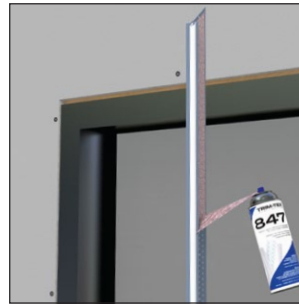
Step 3:

Staple every 6"-8" using 1/2" staples.

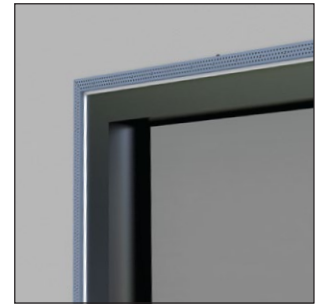
Step 4:

Finish with drywall compound. Remove tear-off strips prior to sanding.

Step 1:



Step 2:



Step 3:



Step 4:

