

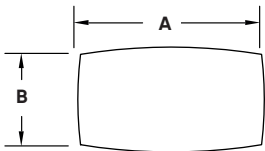
## Smoke & Sound Stop

Smoke & Sound Stop is an easily installed, compressible foam solution for smoke and sound abatement within bottom-wall interior joints that require an STC rating. Unaffected by water, moisture or temperature, Smoke & Sound Stop engineered to remain flexible and effective for the lifetime of the wall assembly.



## Installation Guide

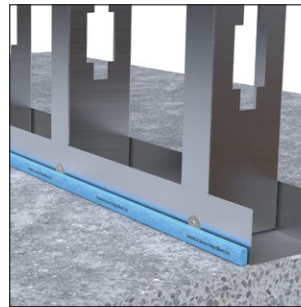
Technical Specs



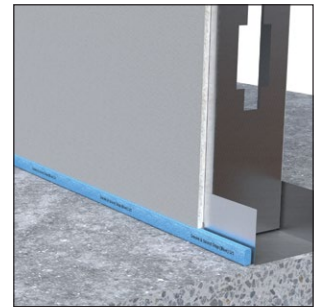
Scan Below for  
Installation Video



### Step 1:



### Step 2:



### Before Installation:

Clean floor surface prior to installation.

### Step 1:

Place Smoke & Sound Stop on the floor against the framing.

### Step 2:

Place drywall on top of Smoke and Sound Stop, ensuring that it is compressed. Leave a  $\frac{1}{2}$ " to  $\frac{3}{4}$ " gap between the drywall and the floor.