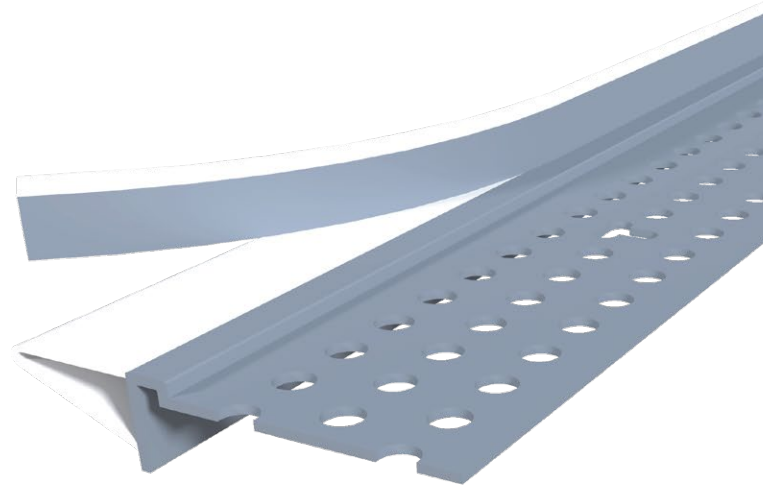
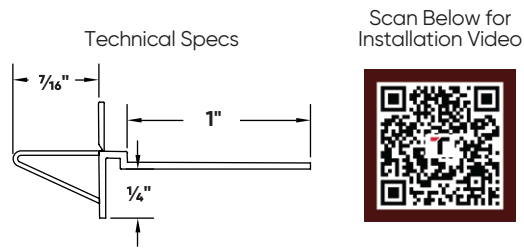


Deflection Bead

When a wall joint is subject to the stresses of building movement, Deflection Bead is the best solution for the job. Its flexible gasket is able to form a perfect seal within the joint, compressing and expanding during deflection (up to $\frac{7}{16}$ "), thus preventing inside corner cracking. Delivers high-performance ratings for smoke and sound.



Installation Guide



Before Installation:

Hang drywall no more than $\frac{1}{2}$ " from the ceiling. Fill void with caulk or other cavity materials if necessary. Measure, cut and dry fit the bead.

Step 1:

Coat both the bead and drywall with Trim-Tex 847 Spray Adhesive.

Step 2:

Press the bead in place, creating a seal between the gasket and the ceiling - do not over-compress.

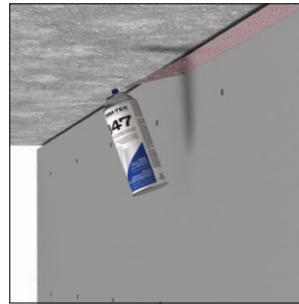
Step 3:

Staple every 6"-8" using $\frac{1}{2}$ " staples.

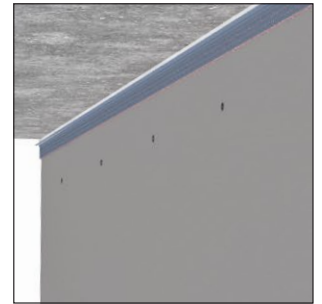
Step 4:

Finish with drywall compound. Remove tear-off strips prior to sanding.

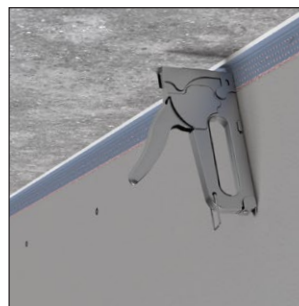
Step 1:



Step 2:



Step 3:



Step 4:

