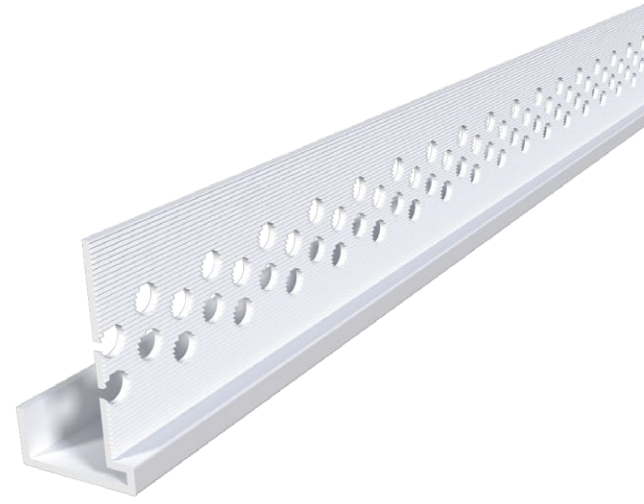


Surface-Mounted “J” Bead Submittal Sheet



STOCK NO.	A SIZE	LENGTH	PCS. PER BOX
2201-50	1/2"	10'	50
2201-58	5/8"	10'	50

Description: A fast and professional way to finish and protect the bottom edge of sheathing board without the hassle of back wrapping. This surface-mounted bead features a wide flange with bonding grooves and perforations for a solid grip on both the base coat and sheathing. The built-in stop helps you maintain a consistent base and finish every time.

Advantages: Made from exterior grade PVC. Provides a high impact resistant, rust-proof termination corner.

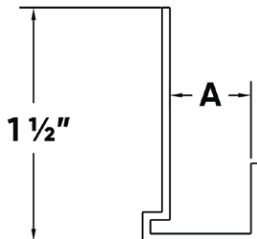
Applicable Standards: Rigid exterior grade PVC products made by Trim-Tex meet ASTM specifications C926, C1063, C1780, C1861, D1784 and D4216.

Installation: Trim-Tex recommends following established acceptable industry standard installation methods. All butt joints, intersections, and ends should be caulked at the time of installation using elastomeric sealant. When painting Trim-Tex Exterior products, please refer to our painting resources to ensure proper performance and prevent product defects such as warping, oil canning, and buckling.

Job Name _____

Contractor _____

Date _____



Approvals (Signatures or Stamps)