

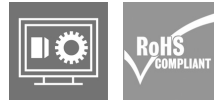
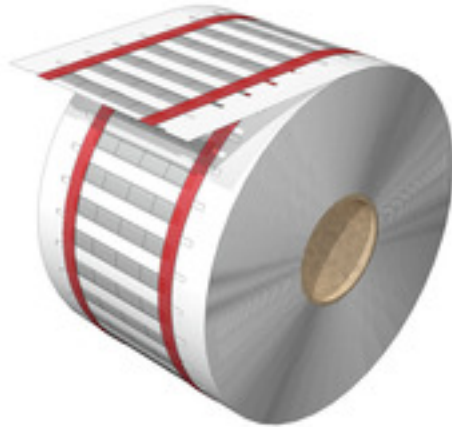
**HS 1.0-3.2/12 MM W****Weidmüller Interface GmbH & Co. KG**

Klingenbergstraße 26

D-32758 Detmold

Germany

www.weidmueller.com



The heat-shrinkable sleeve is printable on 2 sides and can be used for marking and insulating cables and wires. The flexible, heat-shrink material enables a firm, perfect fit around the conductor and therefore saves space.

**General ordering data**

Version	Conductor and cable markers, 1 - 3.2 mm, 12.7 x 6.2 mm, white
Order No.	<a href="#">2526070000</a>
Type	HS 1.0-3.2/12 MM W
GTIN (EAN)	4050118537222
Qty.	4,000 pc(s).
compatible printer	<a href="#">2599430000</a> <a href="#">2599440000</a>

Creation date October 24, 2024 4:16:03 AM CEST

Catalogue status 12.10.2024 / We reserve the right to make technical changes.

## HS 1.0-3.2/12 MM W

**Weidmüller Interface GmbH & Co. KG**

Klingenbergstraße 26

D-32758 Detmold

Germany

[www.weidmueller.com](http://www.weidmueller.com)

## Technical data

### Dimensions and weights

Depth	0.6 mm	Depth (inches)	0.024 inch
Height	12.7 mm	Height (inches)	0.5 inch
Width	6.2 mm	Width (inches)	0.244 inch
Net weight	0.14 g		

### Temperatures

Operating temperature range	-55...135 °C
-----------------------------	--------------

### General data

Colour	white	Halogen	Yes
Material	Polyolefine	Number per roll	4,000
Operating temperature range	-55...135 °C	Operating temperature range, max.	135 °C
Operating temperature range, min.	-55 °C	Recommended industries	Plant manufacture, Energy, Device manufacturer, Machinery
Width	6.2 mm		

### Conductor and cable markers

Conductor O.D.	1 - 3.2 mm	Conductor O.D., max.	3.2 mm
Conductor O.D., min.	1 mm	Conductor cross-section, max.	1.5 mm <sup>2</sup>
Conductor cross-section, min.	0.5 mm <sup>2</sup>	Cross-section for connected wire	0.5 - 1.5 mm <sup>2</sup>
Halogen	Yes	Rate of shrinkage	3:1
Recommended shrinking temperature	90 °C		

### Classifications

ETIM 6.0	EC001530	ETIM 7.0	EC001530
ETIM 8.0	EC001530	ETIM 9.0	EC001530
ECLASS 9.0	27-40-04-01	ECLASS 9.1	27-40-04-01
ECLASS 10.0	27-40-04-01	ECLASS 11.0	27-28-11-02
ECLASS 12.0	27-28-11-02	ECLASS 13.0	27-28-11-02
ECLASS 14.0	27-28-11-02		

### Environmental Product Compliance

RoHS Compliance Status	Compliant without exemption
REACH SVHC	/

### Approvals

ROHS	Conform
------	---------

### Downloads

Catalogues	<a href="#">Catalogues in PDF-format</a>
------------	--

**Data sheet**

**HS 1.0-3.2/12 MM W**

**Weidmüller Interface GmbH & Co. KG**  
Klingenbergstraße 26  
D-32758 Detmold  
Germany

[www.weidmueller.com](http://www.weidmueller.com)

**Drawings**

