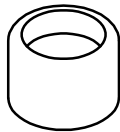


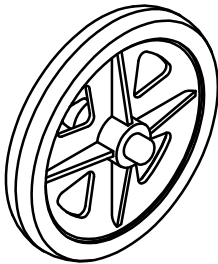
**Z25309-23:**  
**TRIWALKER BASKET HOOKS**  
**(PAIR - LEFT AND RIGHT)**

FOR TW008 AND TW012



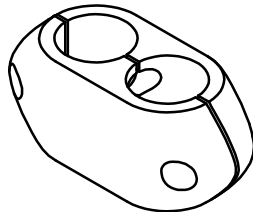
**Z25308-23:**  
**TRIWALKER PLASTIC**  
**TUBE ENDS**

FOR TW008-23 AND  
TW012-23



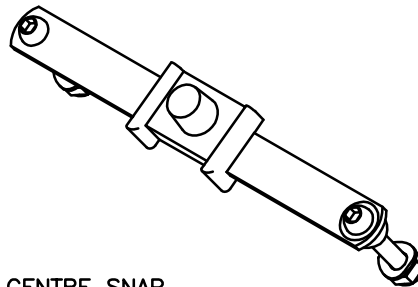
**Z25260-23:**  
**7" REAR WHEEL**  
**ASSEMBLY**

FOR TW008-23  
AND TW012-23



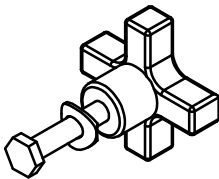
**Z25507-23**  
**CENTRE PLASTIC**  
**BRAKET AS'Y**

FOR TW008-23  
AND TW012-23



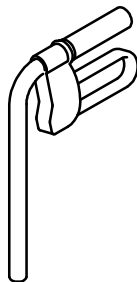
**CENTRE SNAP**  
**LINK ASSEMBLY**

**Z25504-23: WITHOUT RED TOGGLE**  
FOR TW008-23  
AND TW012-23



**Z25170-23:**  
**HEIGHT ADJ**  
**HANDLE WITH**  
**HEX BOLT**

FOR TW008-23  
AND TW012-23



**CLOSED LOOP HANDLE C/W BRAKE**  
**LEVER AND HANDGRIP (CABLE NOT**  
**INCLUDED)**

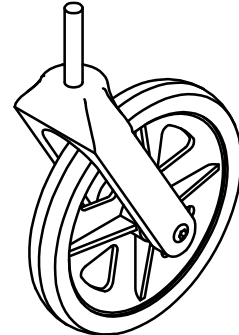
**Z25315A23: RHS / ALU / BLACK**  
**Z25325A23: LHS / ALU / BLACK**

FOR TW008-23  
AND TW012-23



**Z25511-23**  
**SMALL PLASTIC**  
**CASTOR NUT**  
**COVER**

FOR TW008-23  
AND TW012-23



**TRIWALKER ACCESSORIES**  
**AVAILABLE:**

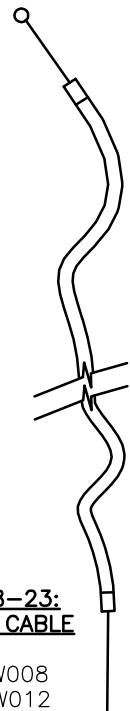
**TWA001:**  
**TRIWALKER BASKET**

**TWA002:**  
**TRIWALKER BAG**

**TWA003:**  
**TRIWALKER TRAY**  
**FOR BASKET**

**FRONT CASTOR ASSEMBLY WITH**  
**FORK & 7" WHEEL**

FOR TW008-23 AND TW012-23  
(ALUMINIUM): Z25255-23  
(BLACK PLASTIC FORK AND WHEEL)



**Z25508-23:**  
**BRAKE CABLE**

FOR TW008  
AND TW012

**drive**

Ainley's Industrial Estate, Eiland HX5 9JP  
T: +44 (0) 1422 314488  
E: enquiries@drivemedical.co.uk  
W: www.drivemedical.co.uk/technical

TITLE:

TW008-23 AND TW012-2-23  
ALUMINIUM TRIWALKERS  
PARTS CATALOGUE

DATE:

08/09/14

SHEET No:

1

DRAWN:

PMK

CHECKED:

REVISION No:

-

SCALE:

NTS

DWG No:

ZTW-23