

25500005A REV. A 312

## Safety Message to Installers of Warning Light Equipment

### **⚠ WARNING**

People's lives depend on your proper installation and servicing of Federal Signal products. It is important to read and follow all instructions shipped with this product and the original product. In addition, listed below are some other important safety instructions and precautions you should follow:

- To properly install the lighting system, you must have a good understanding of automotive systems, along with proficiency in the installation and use of safety warning equipment.
- Do not install equipment or route wiring in the deployment path of an airbag.
- If a vehicle seat is temporarily removed, verify with the vehicle manufacturer if the seat needs to be recalibrated for proper airbag deployment.
- You should frequently inspect the light system to ensure that it is operating properly and that it is securely attached to the vehicle.
- When drilling into a vehicle structure, be sure that both sides of the surface are clear of anything that could be damaged.
- Refer to the instructions packed with related products for additional precautions and information.
- File these instructions in a safe place and refer to them when maintaining and/or reinstalling the product.
- This product contains high-intensity LEDs. Do not stare directly into the lights at a close range or permanent damage to your eyesight may occur.

Failure to follow all safety precautions and instructions may result in property damage, serious injury, or death.

## Overview

This publication has instructions for using the IPX-TRNK4 Trunk Mounting Kit to mount the Impaxx® 300, Impaxx 600, Viper® EXT, MicroPulse™ 3 and MicroPulse 6 lightheads to the trunk of the Ford® Interceptor Sedan.

**NOTE:** For electrical installation instructions, refer to the Installation and Maintenance Instructions packed with the lighthead.

## Unpacking the Product

After unpacking the product, inspect it for damage that may have occurred in transit. If it has been damaged, do not attempt to install or operate it. File a claim immediately with the carrier, stating the extent of damage. Carefully check all envelopes, shipping labels, and tags before removing or destroying them. Ensure that the parts in the Table 1 on page 2 are included in the package. If you are missing any parts, contact Customer Support at 1-800-264-3578, 7 a.m. to 5 p.m., Monday through Friday (CT).

Table 1 Mounting kit contents

Qty.	Description	Part Number
2	Bracket, Trunk Mount, Interceptor Sedan	861300048
6	Screw, #10, Type B, Pan Torx, Blk., SS	7011246-06

## Mounting the Lights

**IMPORTANT:** Plan all cable routing before the installation.

### **⚠ WARNING**

**AIRBAG DEPLOYMENT**—Do not install equipment or route wiring in the deployment path of an airbag. Failure to observe this warning will reduce the effectiveness of the airbag or potentially dislodge the equipment, causing serious injury or death.

To mount the lights to the grille:

1. Route the wire from the lighthouse through the mounting bracket.

### **NOTICE**

**DRILLING PRECAUTIONS**—Check the area into which you are drilling to be sure you do not damage vehicle components. All drilled holes should be deburred and all sharp edges should be smoothed. All wire routings going through drilled holes should be protected by a grommet or convolute/split loom tubing.

### **NOTICE**

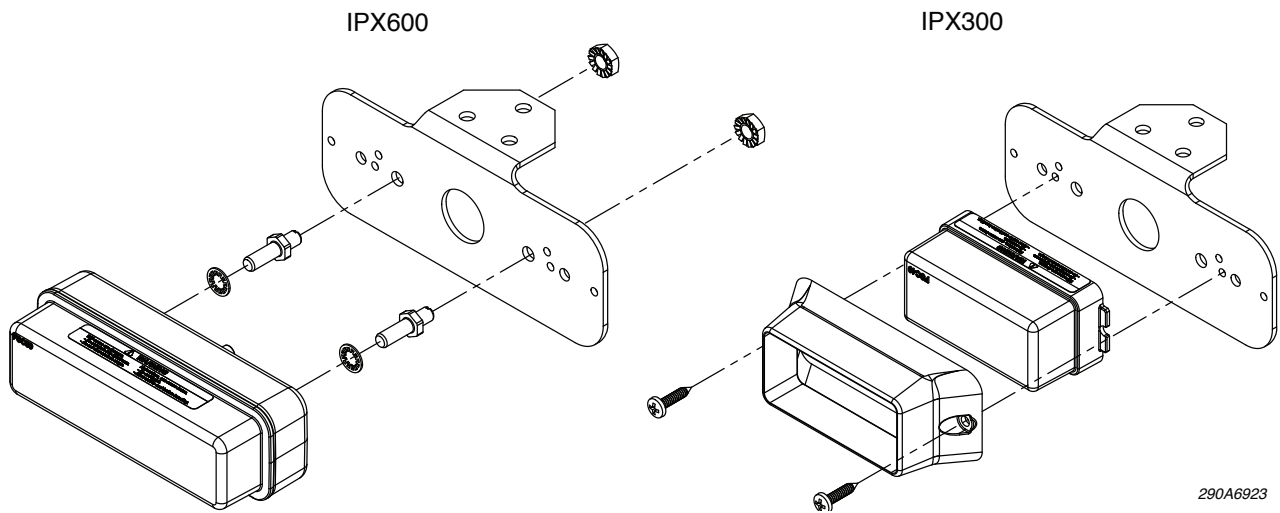
**DO NOT OVERTIGHTEN SCREWS/NUTS**—To avoid damage to the lighthouses, do not overtighten the screws/nuts.

2. See Figures 2 through 4 on page 3. Attach the lighthouses to the brackets using the hardware supplied with the lighthouses.
3. See Figure 1. Position the bracket of the underside of the trunk lid as shown. Mark three mounting holes.

Figure 1 Impaxx attached to bracket

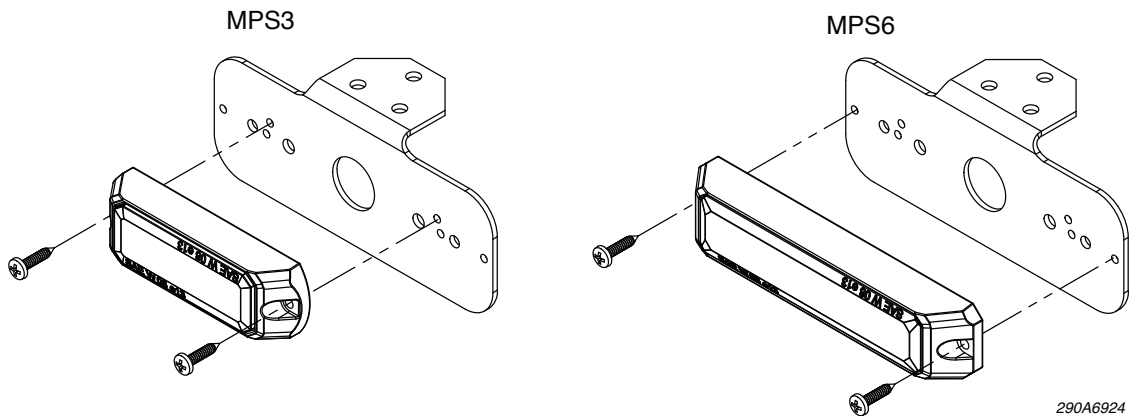


**Figure 2** Impaxx attached to bracket

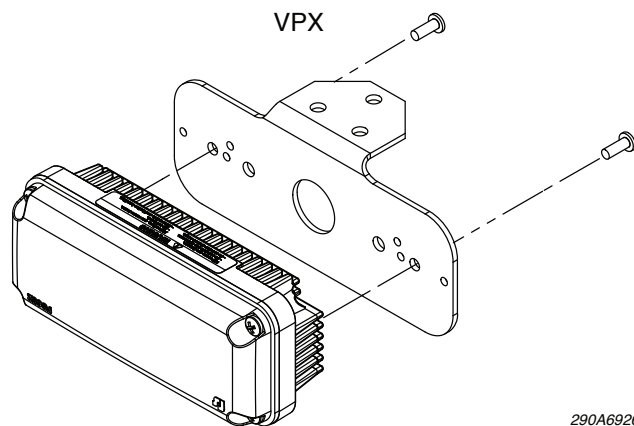


4. Drill three 0.159" diameter (#21 drill) holes.
5. Mount the bracket to the underside of the trunk lid.
6. Repeat the installation for the other side of the trunk lid.

**Figure 3** MicroPulse attached to bracket



**Figure 4** Viper attached to bracket



7. Connect the Impaxx, MicroPulse, or Viper EXT lights as described in the instructions provided with the lights.
8. Test the lights for proper operation.

## **Getting Technical Support and Service**

Federal Signal Corporation will service your equipment or provide technical assistance with any problems that cannot be handled locally. Any product returned to Federal Signal for service, inspection, or repair must be accompanied by a Return Material Authorization number. The RMA number can be obtained from your local distributor or Federal Signal. Please provide a brief explanation of the service requested or the nature of the malfunction. Contact your local dealer/distributor for replacement parts availability or contact the Federal Signal Service Department (7 a.m. to 5 p.m., Monday through Friday, Central Time) at:

Service Department  
Federal Signal Corporation  
2645 Federal Signal Drive  
University Park, IL 60484-3167  
800-433-9132  
800-343-9706 (fax)  
[www.fedsig.com](http://www.fedsig.com)



2645 Federal Signal Drive, University Park, IL 60484-3167  
Tel.: (800) 264-3578 • Fax: (800) 682-8022  
[www.fedsig.com](http://www.fedsig.com)

© 2012 Federal Signal Corporation  
Ford is a registered trademark of Ford Motor Company.  
Impaxx, MicroPulse, Viper are trademarks of Federal Signal Corp.